An aerial photograph of a nuclear power plant. The central feature is a large, white, hourglass-shaped cooling tower that is emitting a thick plume of white steam that rises into the sky. To the left of the cooling tower, there are several smaller, white, cylindrical structures, also emitting steam. The plant itself is a complex of various structures, including pipes, walkways, and a tall, thin chimney stack. The plant is situated in a flat, open area with some greenery in the foreground. The background shows a line of trees under a clear blue sky. A solid green horizontal bar is positioned above the text on the right side of the image.

Agency Update for South Carolina Governor's Nuclear Advisory Council



SC DEPARTMENT *of*
**ENVIRONMENTAL
SERVICES**

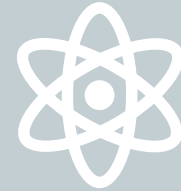


SC DEPARTMENT of
**ENVIRONMENTAL
SERVICES**

Our Role in Regulating and Responding to Nuclear Energy

Nuclear Emergency Response

Savannah River Site
Environmental
Surveillance and Oversight
Program (ESOP)

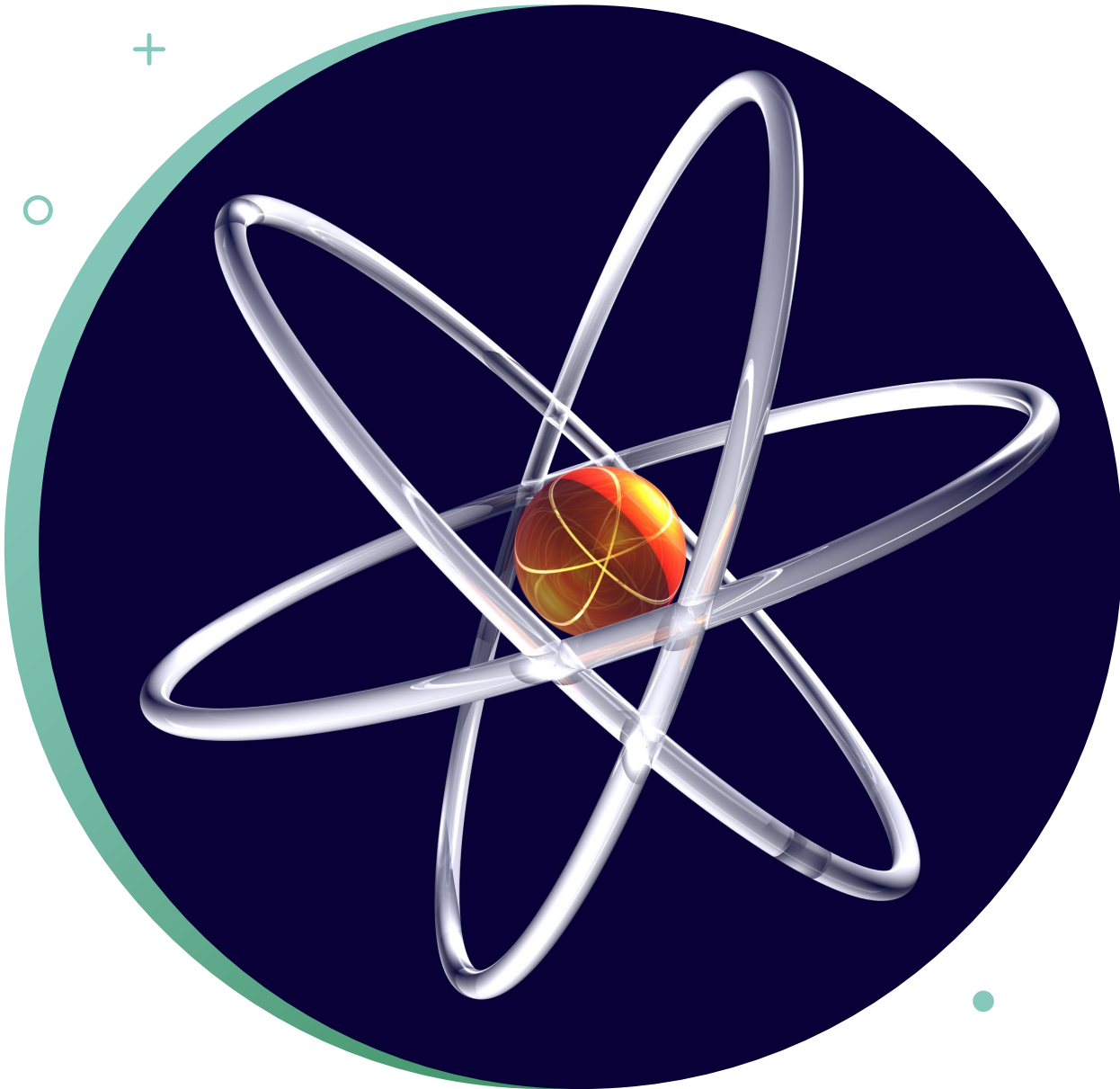


Radiological Waste
Management

Wastewater

Radiological Health
Protection

Surface/Groundwater
Withdrawal



Poised for SC's Nuclear Expansion

- SCDES is ready to be a capable, engaged partner in the advancement and implementation of nuclear energy generation capabilities in South Carolina
 - Supported the State's RFI as Host of the DOE Nuclear Lifecycle Campus
 - Working Relationships with the NRC for clear understanding of the federal vs state role in the use, handling, transportation, storage, and disposal of nuclear waste
 - Supporting staff to enhance their knowledge of small modular reactors and fission
 - On-going relationships with SRS, Department of Commerce

Energy Security Act

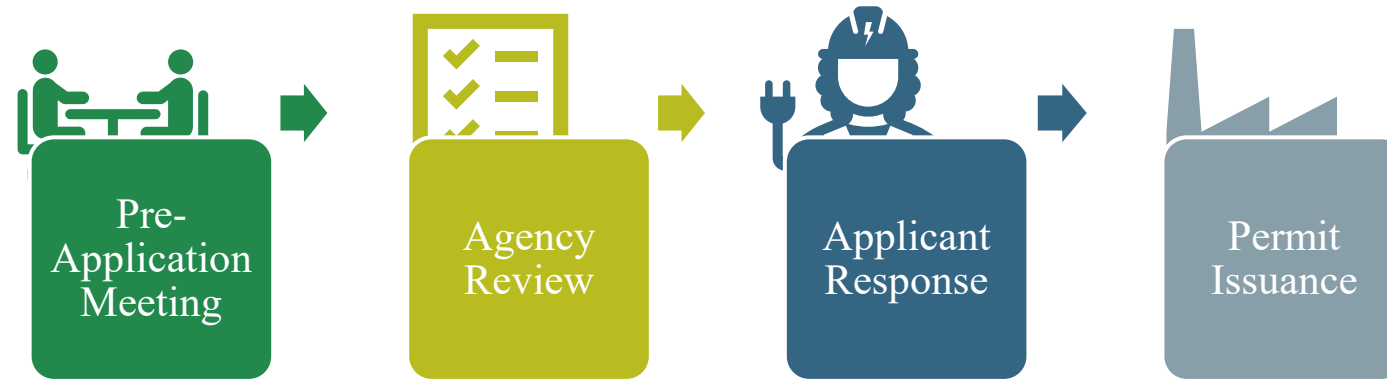


Energy Infrastructure Project

A project entailing the construction, placement, authorization, or removal of energy infrastructure including, but not limited to, electric transmission and generation assets, natural gas transmission assets, and all associated or appurtenant infrastructure and activities, including communications and distribution infrastructure.



Permit Certainty for Energy Infrastructure



Overall Review Timeframe

- Six (6) Months after date the application is received
- Off-ramp provisions with mutual, written agreement

Pre-Application Meeting

- Required prior to the submission of **each** application – regardless of complexity
- **Flesh out key issues with the potential to delay or impact achieving 6 months**

Completeness Review

- SCDES has 30 days to determine if application is complete
- Applicants have 15 days to respond to incomplete applications

S.C. Energy Security Act

Total Applications Received: 79

Permits Issued: 67

Permits Issued within 6 months:
66

Timeline Agreements Executed: 1





SC DEPARTMENT *of*
**ENVIRONMENTAL
SERVICES**

Get in touch

Myra C Reece // Director, SCDES

Myra.Reece@des.sc.gov

803.667.1113



South Carolina Department of
Environmental Services



@SouthCarolinaDES



@SouthCarolinaDES



South Carolina Department of
Environmental Services



@SC_EnvServices