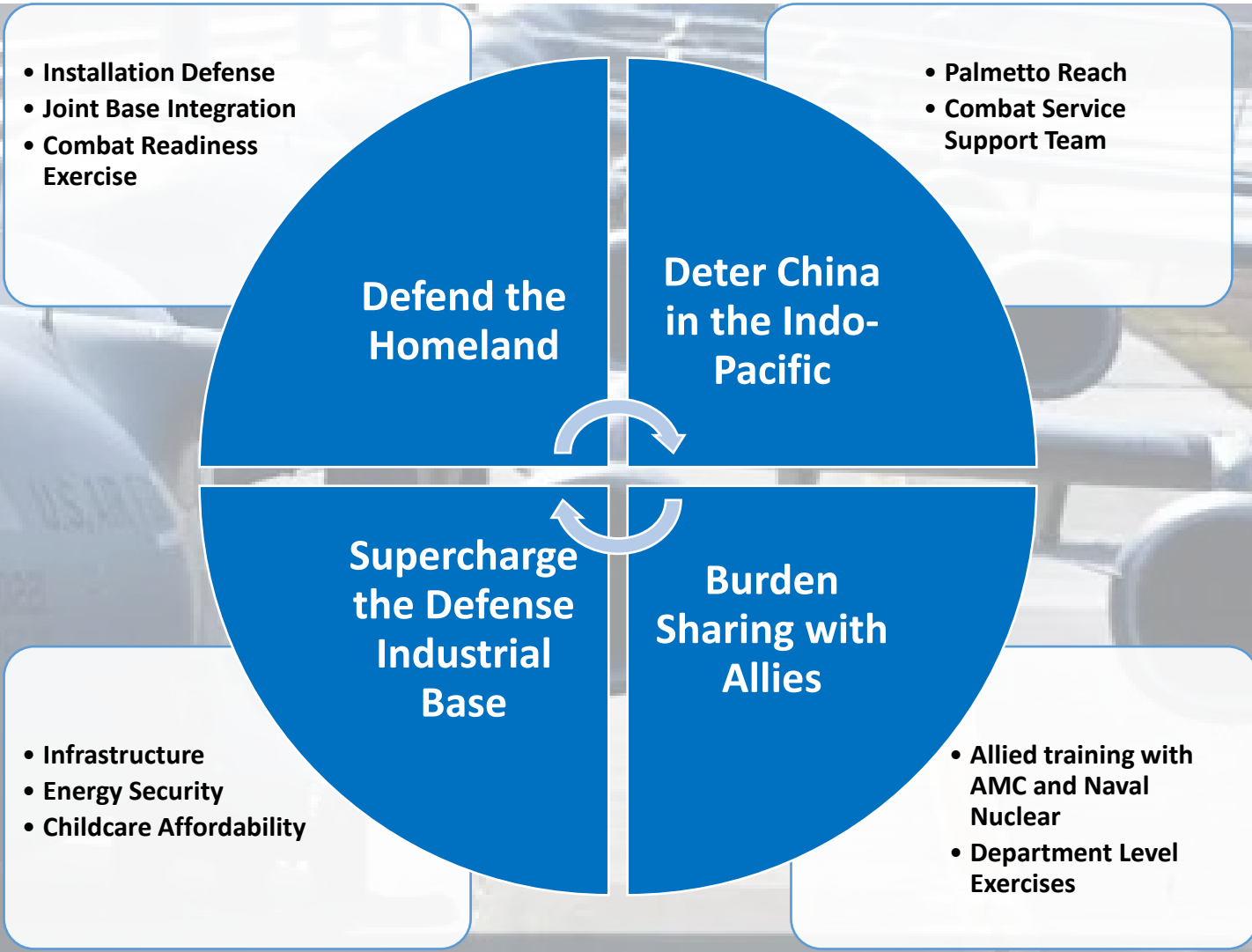






National Security Strategy – “Peace Through Strength”







JOINT BASE CHARLESTON GEOGRAPHY

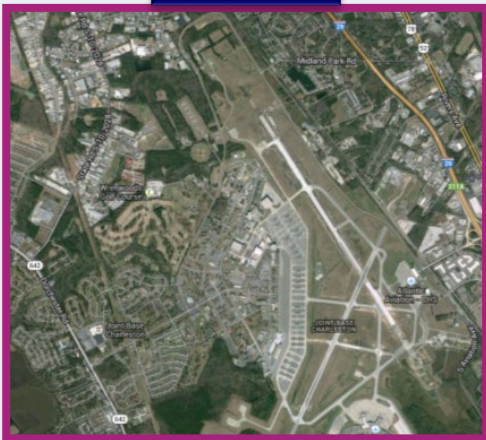
JB Charleston Scope

North Auxiliary Airfield



15 Personnel 2,260 acres

Air Base



10K Personnel 3,278 acres

JB Charleston Personnel & Supported Land Areas

Total Population: 132,696

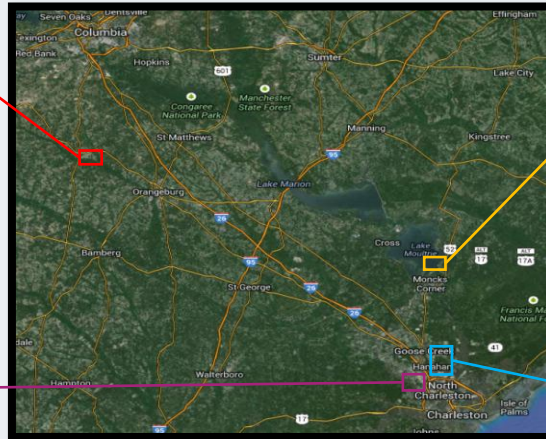
Active Duty: 11,109

Reservist: 3,220

Civilian: 5,040

Retirees: 73,580

Dependents: 35,017



Acreage: 22,184

Miles of Shoreline: 22

Miles of Railway: 38

4 Runways, 3 Wharfs & 4 Piers

Housing Units: 1,616 family homes

Dorms: 541 dorm rooms

Short Stay Outdoor Rec Area



10 Personnel 61 acres

Naval Weapons Station



15K Personnel 16,585 acres



Naval Nuclear Propulsion Training Program



- Over 158,000 nuclear propulsion plant operators trained since 1952
- Officers – Aircraft carriers, submarines, HQ Engineers, training instructors
 - Naval Nuclear Laboratory civilians
- Enlisted – Electrician, Reactor Operators, Mechanics, Laboratory Technicians
 - 12 to 18 week initial in-rate instruction
- UK and Australian personnel exchange program
- A-School and Nuclear Power School in Charleston
 - In-rate and academic
- Nuclear Prototypes – Charleston & Ballston Spa, NY
 - Under-instruction plant operation during normal and casualty response





Naval Nuclear Power Training Command - NNPTC



Overall

- ~ 2,600 graduates per year
- 550 staff – 50% instructors
- 226 acres / 10 support building

Nuclear Field 'A' School

- 1,100 students at any given time
- 2 new classes each week
- Dedicated student advisors 25:1
- Accelerated advancement upon graduation

Nuclear Power School

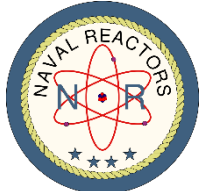
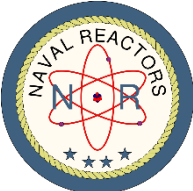
- Classes every 8 weeks
- 3 Concurrent classes of ~400 students
- Other students
 - International
 - Prospective aircraft carrier Executive Officer

Facilities

- 25,000 meals served weekly
- Fitness, Liberty Center
- Wellness Center
 - Embedded Mental Health
 - Sailor Development
- Barracks – 3,600 Sailors



Nuclear Power Training Unit Charleston



A combined Department of War and Department of Energy team dedicated to training future Naval Nuclear Propulsion Program operators



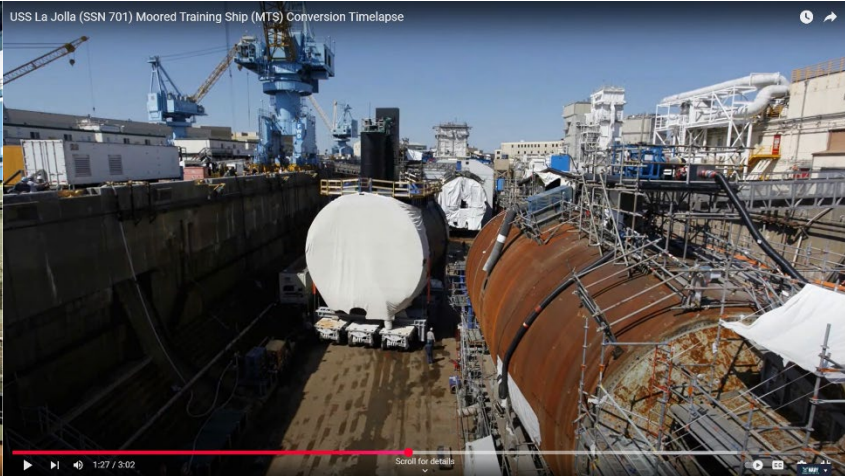
NPTU Charleston



- ~ 3000 nuclear operators each year
- Not just what to do but “why”
- Training occurs 24/7/365
- Operations supported by 1,400 Navy and 400 NNL civilian staff members
- Sailors are assigned to NPTU for six months
- During this time, they work about 1,500 hours, including rotating shift work
- Students learn propulsion plant systems, operating instructions, and extensive watchstanding experience
- Curriculum of lectures, high fidelity simulators, and hands-on training on an operating reactor plant
- Final step in a 12 (officer) to 20 (enlisted) month training pipeline



Moored Training Ships

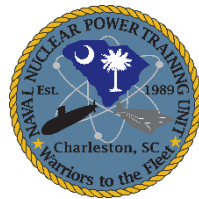


USS La Jolla (SSN 701) and USS San Francisco (SSN 711) converted to Moored Training Ships by removing tactical systems and installing fluid and electrical safety features to support student training.





Next Generation Navy Nuclear Training



- High fidelity full scope reactor and propulsion plant simulators
- First class of trainees mid-2030s
- Still use existing facilities

- Located on Naval Weapons Station Charleston
- Expected construction commence CY2026
- \$338M investment



Questions



CAPT Reed Koepp, USN
Joint Base Charleston Deputy Commander &
Naval Support Activity Charleston Commanding Officer